

DS-3E0310P-E/M

8-Port Unmanaged PoE Switch

DS-3E0310P-E/M switches are layer 2 unmanaged PoE switches, providing advanced PoE power supply technology on the basis of high-performance access to ensure stable data upload. The switches support long range function.



Key Feature

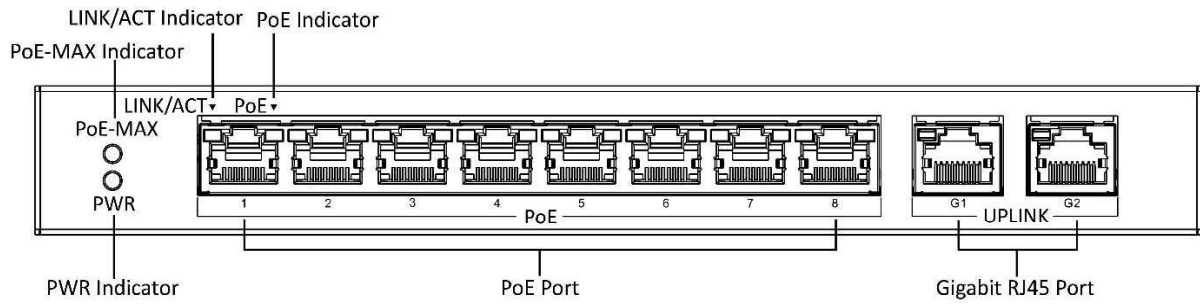
- 8 × 10/100Mbps PoE ports, and and 2 × Gigabit RJ45 port.
- IEEE 802.3at/af standard for PoE ports (Max. 60 W PoE output).
- IEEE 802.3, IEEE 802.3u, IEEE 802.3x, IEEE 802.3z and IEEE 802.3ab standard.
- 6 KV surge protection for PoE ports.
- Up to 300 m long-range transmission.
- Wire-speed forwarding.
- Store-and-forward switching.
- Solid high-strength metal shell.
- Reliable fan-free design.

Specification

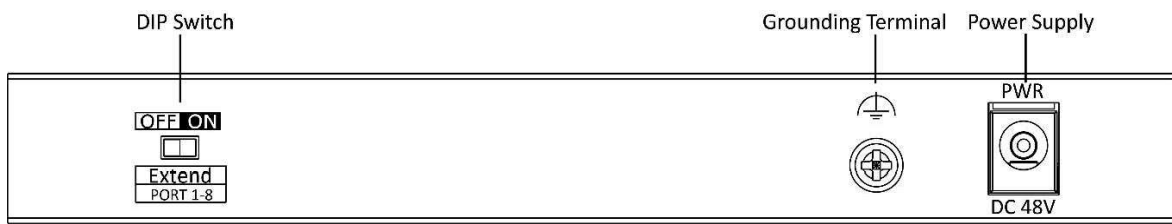
Model		DS-3E0310P-E/M
Network parameters	Port number	8 × 10/100Mbps PoE ports, and and 2 × Gigabit RJ45 ports
	Port type	RJ45 port, full duplex, MDI/MDI-X adaptive
	Standard	IEEE 802.3, IEEE 802.3u, IEEE 802.3x, IEEE 802.3z and IEEE 802.3ab
	Forwarding mode	Store-and-forward switching
	Working mode	Standard mode (default), Extend mode
	Ports for long-distance transmission	Ports 1 to 8
	MAC address table	16 K
	Switching capacity	5.6 Gbps
	Packet forwarding rate	4.1664 Mpps
	Internal cache	4 Mbits
PoE power supply	PoE standard	Ports 1 to 8: IEEE 802.3af, IEEE 802.3at
	PoE power pin	Ports 1 to 4: Ethernet cables 1/2/3/6 and 4/5/7/8 provide power supply simultaneously.
	PoE port	Ports 1 to 8
	Max. port power	Ports 1 to 8: 30 W
	PoE power budget	60 W
Dialing function	Long range	Ports 1 to 8: up to 300 m.
General	Shell	Metal material, fan-free design
	Gross weight	1.20 kg (2.65 lb)
	Net weight	0.555 kg (1.22 lb)
	Dimension (L × H × D)	217.6 mm × 103.35 mm × 27.8 mm (8.57" × 4.07" × 1.09")
	Operating temperature	-10°C to 40°C (14°F to 104°F)
	Storage temperature	-40°C to 85 °C -40°F to 185°F)
	Operating humidity	5% to 95% (no condensation)
	Storage humidity	5% to 95% (no condensation)
	Power supply	48 VDC, 1.35 A
	Power consumption in idle	< 5 W
	Max. power consumption	65 W
	Power source	65 W
Approval	EMC	FCC (47 CFR Part 15, Subpart B); CE-EMC (EN 55032: 2015, EN 61000-3-2: 2014, EN 61000-3-3: 2013, EN 55024: 2010 +A1: 2015); RCM (AS/NZS CISPR 32: 2015); IC (ICES-003: Issue 6, 2016)
	Safety	UL (UL 60950-1); CB (IEC 60950-1:2005 + Am 1:2009 + Am 2:2013); CE-LVD (EN 60950-1:2005 + Am 1:2009 + Am 2:2013)
	Chemistry	CE-RoHS (2011/65/EU); WEEE (2012/19/EU); Reach (Regulation (EC) No 1907/2006)

Physical Interface

Front panel:



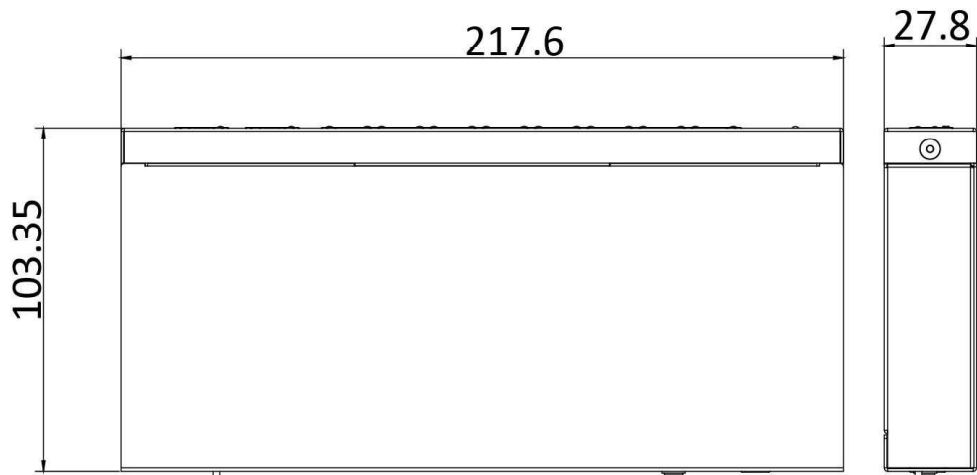
Back panel:



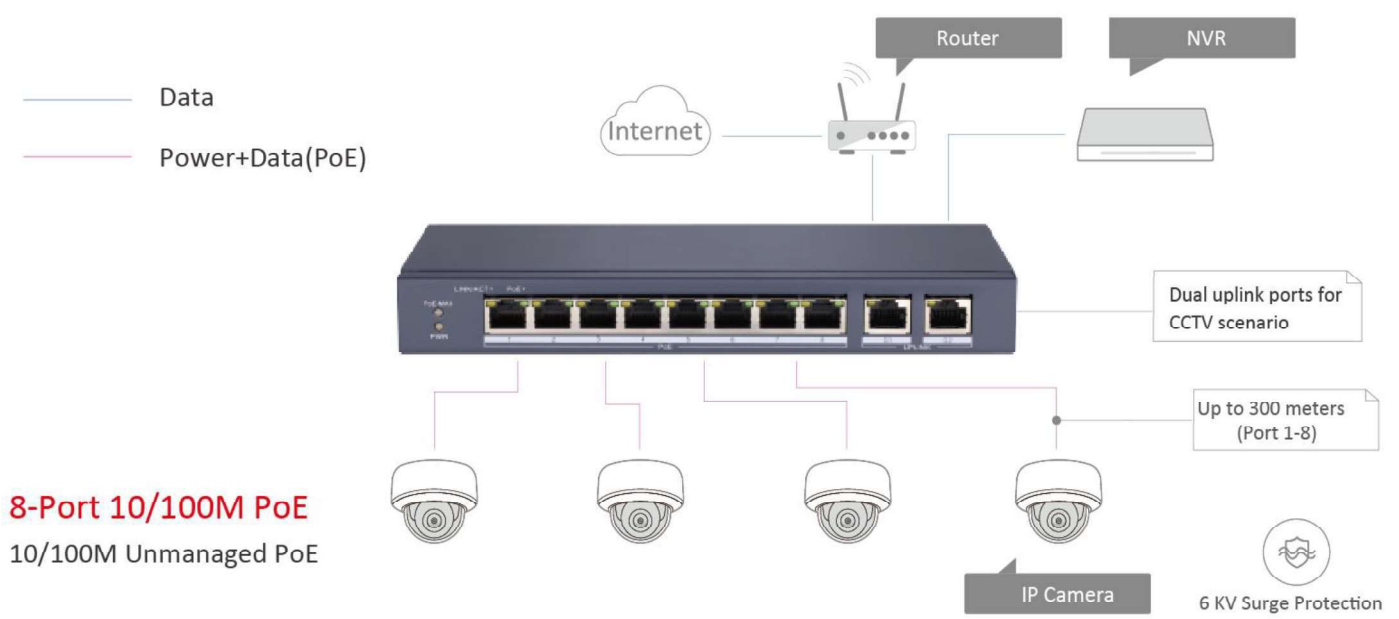
Available Model

DS-3E0310P-E/M

Dimension (unit: mm)



Typical Application



8-Port 10/100M PoE
10/100M Unmanaged PoE