



### More Capabilities beyond Plug-and-play Connectivity

Today's growing businesses demand and rely more on their network to carry out mission-critical business activities. Companies are putting more network traffic and applications on their Ethernet infrastructure. For example, the increasing deployments of VoIP phones and IP cameras require more than simple plug-and-play connectivity. It needs the network intelligence to separate the voice and video traffic from data, and prioritize them accordingly. Additionally, Internet-based applications such as Hotmail and Google Calendaring have made keeping the network up a business-critical need. However, companies do not necessarily have more money or advanced training to deal with complex managed switches. NETGEAR's new ProSafe Plus Switches meet this growing need by providing fundamental network features that will help optimize the performance of business networks. ProSafe Plus Switches also offer traffic monitoring for users to observe traffic behavior. If there are connectivity issues, these switches can identify and even locate connection problems via cable diagnostic test. To optimize traffic through the switches, ProSafe Plus Switches offer both port and tag-based prioritization to keep latency-sensitive traffic moving ahead of less critical packets. Also, ProSafe Plus Switches offer port and 802.1Q-based VLAN as a means of improving security and network performance. ProSafe Plus Switches are an upgrade from the plug-and-play Unmanaged Switch, delivering great value for empowering your network, delivering great value to the end user.

#### Features

- ProSafe Plus Switch delivers network monitoring, traffic prioritization and VLAN
- 24 ports deliver up to 2000 Mbps of dedicated, non-blocking bandwidth per port
- Simple, yet useful network set-up on top of plug-and-play connectivity
- Gigabit speed with QoS, VLAN and network monitoring
- VLAN support for traffic segmentation
- Quality of Service (QoS) for traffic prioritization
- Auto "denial-of-service" (DoS) prevention
- Troubleshoot connection issues via cable test
- Loop prevention and broadcast storm controls
- IGMP snooping for multicast optimization
- Rate limiting for better bandwidth allocation
- Port mirroring for network monitoring
- Jumbo frame support

ProSafe Plus

Quick  
Configuration

#### NETGEAR Green

- Up to 60% lower power consumption than the non-Green version
- Auto power-down and cable-length detection for energy savings
- Packaging manufactured with at least 80% recycled materials

**24/7**

TECHNICAL SUPPORT\*

\*Basic technical support  
free for 90 days only

1-888-NETGEAR (638-4327)

UK: 0844-875-4000

Australia: 1300-361-254

Email: info@NETGEAR.com



Features	GS105	GS108	GS108P	GS105E	GS108E	GS108PE	GS116E	JGS516	JGS524	JGS524E
10/100/1000 Mbps Ports	5	8	8	5	8	8	16	16	24	24
PoE ports			4			4				
Divide Network into Groups (VLAN)				●	●	●	●			●
Set Traffic Priority (QoS)				●	●	●	●			●
Bandwidth Control				●	●	●	●			●
Auto DoS Prevention				●	●	●	●			●
Loop Detection				●	●	●	●			●
Cable Test				●	●	●	●			●
IGMP Snooping				●	●	●	●			●
Warranty†	Lifetime	Lifetime	Lifetime	Lifetime	Lifetime	Lifetime	Lifetime	Lifetime	Lifetime	Lifetime

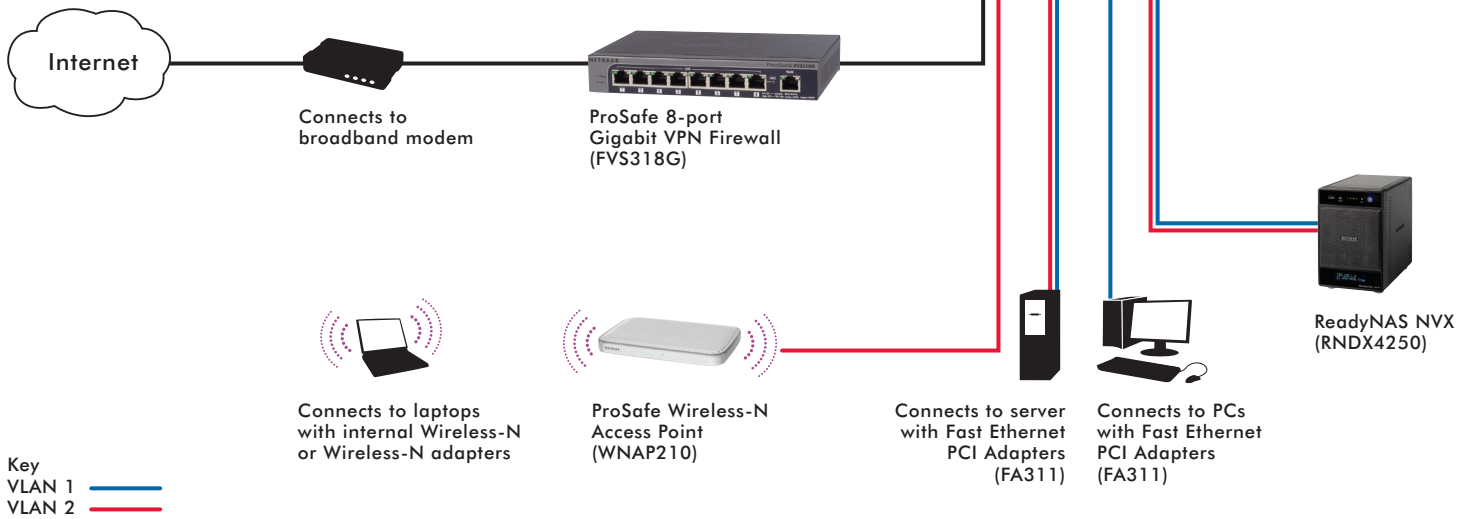
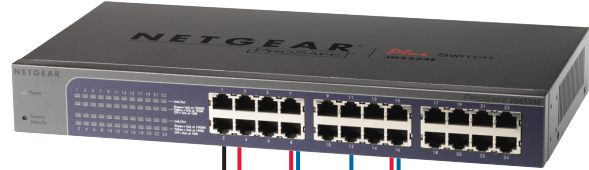
Backed by a lifetime hardware warranty, NETGEAR's ProSafe line of business networking products offers a wide array of easy-to-use, professional-grade switching, wireless, software and security solutions.

## The NETGEAR Difference

### JGS524E

- ✓ Configurable with simple setup
- ✓ Prioritize video/voice
- ✓ Monitor network traffic
- ✓ Create network groups
- ✓ Cable test
- ✓ Green Ethernet for power savings

**ProSafe Plus Switch  
24-port Gigabit Ethernet  
(JGS524E)**



**System Requirements**

- Ethernet Category 5 cable
- Network card for each PC
- Microsoft® Windows® 7, XP or Vista®, for running Configuration Utility

**Technical Specifications****• Standards Compliance**

- IEEE® 802.3z 1000BASE-T Gigabit Ethernet
- IEEE 802.3i 10BASE-T Ethernet
- IEEE 802.3u 100BASE-TX Fast Ethernet
- Compatible with all major network software

**• Network Ports**

- Twenty-four (24) 10/100/1000 Mbps Ethernet RJ-45 ports

**• AC Power**

- 100-240V, 50-60Hz, 0.9A max, localized to country of sale

**• Physical Specifications**

- Dimensions (h x w x d):  
43 x 330 x 173 mm  
(1.7 x 13 x 6.8 in)
- Weight: 1.43 kg (3.15 lb)

**• Environmental Specifications**

- Operating temperature: 32° to 104° F  
(0° to 40 °C)
- Operating humidity: 90% maximum relative humidity, non-condensing

**• Electromagnetic Compliance**

- CE mark (commercial), FCC Part 15 Class A, EN 55022 (CISPR 22) Class A, VCCI Class A, C-Tick

**• Safety Agency Approvals**

- UL/cUL 60950, CB, CCC

**Package Contents**

- ProSafe® Plus Switch 24-port Gigabit Ethernet Switch (JGS524E)
- Rack-mount kit
- Power cord
- Quick Install Guide
- Installation CD with Configuration Utility software

**Warranty**

- NETGEAR Lifetime Warranty<sup>†</sup>

**NETGEAR®**

350 E. Plumeria Drive  
San Jose, CA 95134-1911 USA  
1-888-NETGEAR (638-4327)  
E-mail: [info@NETGEAR.com](mailto:info@NETGEAR.com)  
[www.NETGEAR.com](http://www.NETGEAR.com)

© 2010 NETGEAR, Inc. NETGEAR, the NETGEAR Logo, NETGEAR Digital Entertainer Logo, Connect with Innovation, FrontView, IntelliFi, PowerShift, ProSafe, ProSecure, RAIDar, RAIDiator, RangeMax, ReadyNAS, Smart Wizard, X-RAID, and X-RAID2, are trademarks and/or registered trademarks of NETGEAR, Inc. and/or subsidiaries in the United States and/or other countries. Mac and the Mac logo are trademarks of Apple Inc., registered in the U.S. and other countries. Other brand names mentioned herein are for identification purposes only and may be trademarks of their respective holder(s). Information is subject to change without notice. All rights reserved.

This product is packaged with a limited warranty, the acceptance of which is a condition of sale. This product has been tested for quality assurance and this product or its components may have been recycled.

\*Basic technical support provided for 90 days from date of purchase.

†Lifetime warranty for product purchased after 05/01/2007.

<sup>1</sup>Maximum power savings when compared to the equivalent NETGEAR Unmanaged product.